

Features

- Modern design.
- Ceramic sink with overflow.
- Sink features counter space.
- Water resistant exterior vanity panels.
- Soft-closing drawer.
- Black cabinet handles.



Material

- White ceramic integrated sink.
- Engineered wood vanity base.

Installation

- Wall mounted installation.


Configurations

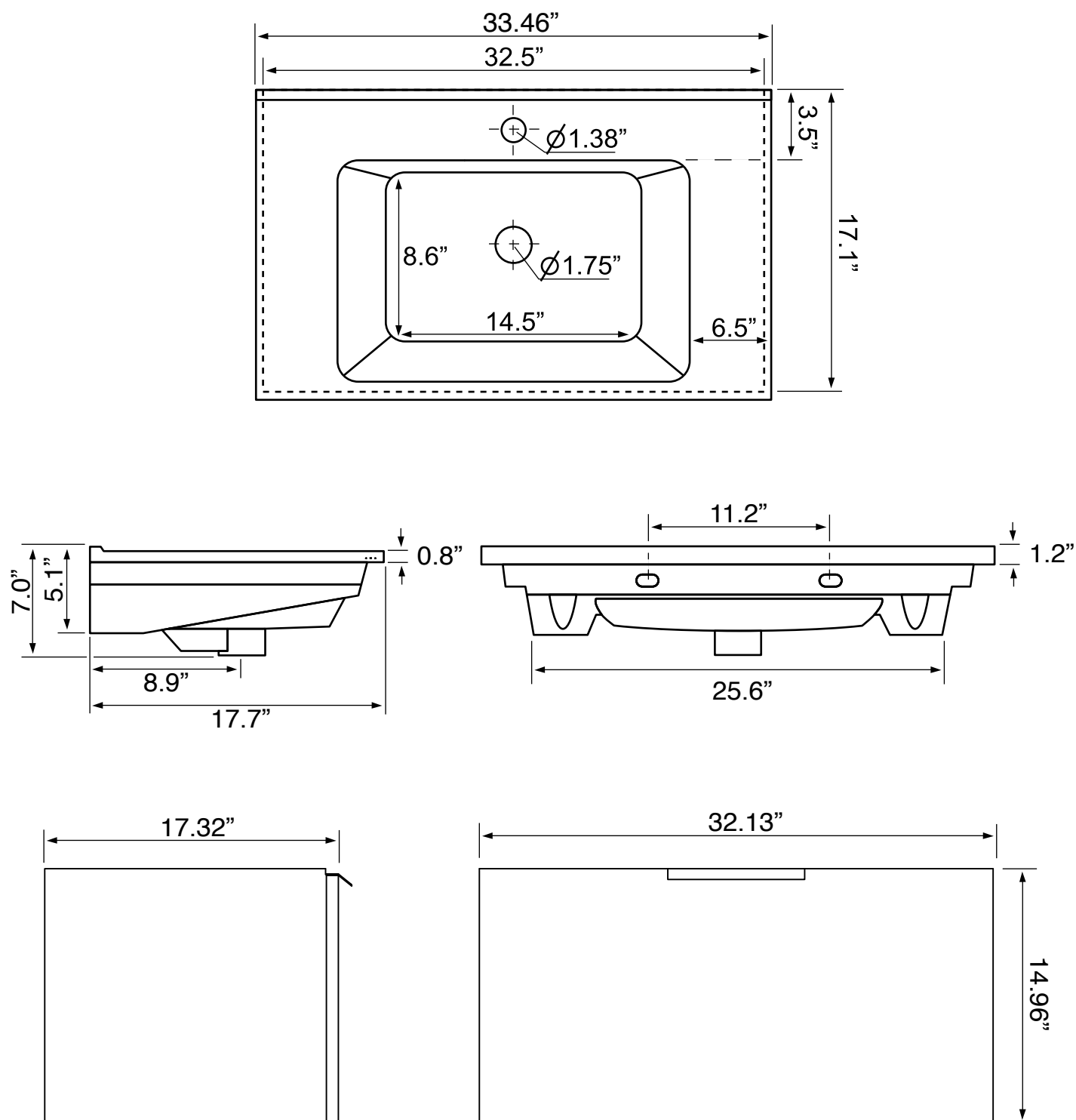
- Single hole.
- Three hole (special order).

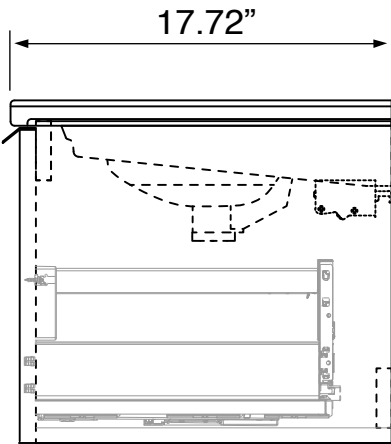
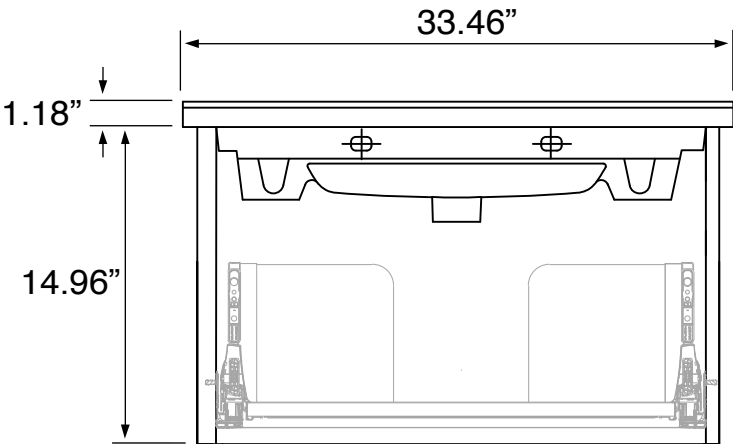
Nameek's One-Year Limited Warranty

See website for warranty information details.

Vanity Cabinet Color/Finish Details

Color	Description
	Brown Oak





Technical Information

Bowl type:	Single
Installation:	Wall mounted
Bowl dimensions:	Depth: 4.5"
	Width: 11.5"
	Length: 19.5"
Drain hole:	1.75"
Faucet hole:	1.38"
Hole configurations:	1, 3
Weight:	130 lbs

Notes

Install this product according to the installation instructions.

Includes mounting hardware.